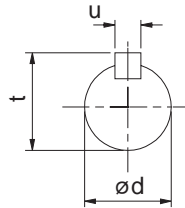
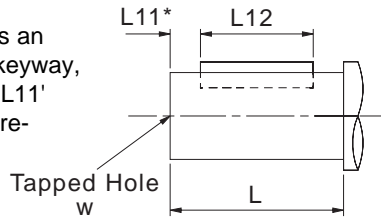


0110

OUTPUTSHAFT OPTIONS

* Inch shaft has an open ended keyway, therefore no 'L11' dimension is required.



Column 11 Entry

- N** Standard Inch
- C** Standard Metric

OUTPUTSHAFT OPTIONS - single reduction

SIZE OF UNIT	TYPE OF OUTPUT SHAFT	COLUMN 11 ENTRY	DIMENSIONS IN INCHES (Metric Shaft in mm)						
			ød	L	L11	L12	t	u	w
05	Inch *	N	0.7500"/0.7495"	1.575"	-	1 ⁹ / ₃₂ "	0.829"	3 ³ / ₁₆ "	1/4" UNF x 0.63" deep
	Metric	C	20.015 / 20.002	40	4	32	22.5	6	M6 x 1, 16 deep
06	Inch *	N	1.0000"/0.9995"	1.969"	-	1 ⁹ / ₁₆ "	1.106"	1/4"	1/4" UNF x 0.71" deep
	Metric	C	25.015 / 25.002	50	4	40	28	8	M10 x 1.5, 22deep
07	Inch *	N	1.2500"/1.2495"	2.362"	-	2"	1.359"	1/4"	1/4" UNF x 0.71" deep
	Metric	C	30.015 / 30.002	60	4	50	33	8	M10 x 1.5, 22 deep
08	Inch *	N	1.6250"/1.6240"	3.150"	-	2 ³ / ₈ "	1.784"	3/8"	5/8" UNF x 1.25" deep
	Metric	C	40.018 / 40.002	80	5	70	43	12	M16 x 2.0, 36 deep

OUTPUTSHAFT OPTIONS - double, triple, quadruple and quintuple reduction

SIZE OF UNIT	TYPE OF OUTPUT SHAFT	COLUMN 11 ENTRY	DIMENSIONS IN INCHES (Metric Shaft in mm)						
			ød	L	L11	L12	t	u	w
01	Inch *	N	0.7500"/0.7495"	1.575"	-	1 ⁹ / ₃₂ "	0.829"	3 ³ / ₁₆ "	1/4" UNF x 0.63" deep
	Metric	C	20.015 / 20.002	40	4	32	22.5	6	M6 x 1, 16 deep
02	Inch *	N	1.0000"/0.9995"	1.969"	-	1 ⁹ / ₁₆ "	1.106"	1/4"	1/4" UNF x 0.71" deep
	Metric	C	25.015 / 25.002	50	4	40	28	8	M10 x 1.5, 22 deep
03	Inch *	N	1.0000"/0.9995"	1.969"	-	1 ⁹ / ₁₆ "	1.106"	1/4"	1/4" UNF x 0.71" deep
	Metric	C	25.015 / 25.002	50	4	40	28	8	M10 x 1.5, 22 deep
04	Inch *	N	1.2500"/1.2495"	2.362"	-	2"	1.359"	1/4"	3/8" UNF x 0.86" deep
	Metric	C	30.015 / 30.002	60	4	50	33	8	M10 x 1.5, 22 deep
05	Inch *	N	1.3750"/1.3745"	2.756"	-	2 ³ / ₈ "	1.507"	5 ¹ / ₁₆ "	3/8" UNF x 0.75" deep
	Metric	C	35.018 / 35.002	70	7	60	38	10	M12 x 1.75, 28 deep
06	Inch *	N	1.3750"/1.3745"	2.756"	-	2 ³ / ₈ "	1.507"	5 ¹ / ₁₆ "	3/8" UNF x 0.75" deep
	Metric	C	35.018 / 35.002	70	7	60	38	10	M12 x 1.75, 28 deep
07	Inch *	N	1.6250"/1.6240"	3.150"	-	2 ³ / ₈ "	1.784"	3/8"	5/8" UNF x 1.25" deep
	Metric	C	40.018 / 40.002	80	5	70	43	12	M16 x 2.0, 36 deep
08	Inch *	N	2.1250"/2.1240"	3.937"	-	2 ³ / ₄ "	2.338"	1/2"	3/4" UNF x 1.50" deep
	Metric	C	50.018 / 50.002	100	10	80	53.5	14	M16 x 2.0, 36 deep
09	Inch *	N	2.3750" / 2.3740"	4.72"	-	3 ¹¹ / ₁₆ "	2.65"	0.625"	3/4" UNF 1.65" deep
	Metric	C	60.030 / 60.011	120	10	100	64	18	M20 x 2.5, 42 deep
10	Inch *	N	2.875" / 2.874"	5.51"	-	4 ⁵ / ₈ "	3.20"	0.75"	3/4" UNF 1.65" deep
	Metric	C	70.030 / 70.011	140	15	110	74.5	20	M20 x 2.5, 42 deep
13	Inch *	N	3.625" / 3.624"	6.69"	-	5 ¹⁵ / ₁₆ "	4.01"	0.875"	1" UNF 1.97" deep
	Metric	C	90.035 / 90.013	170	15	140	95	25	M24 x 3.0, 50 deep
14	Inch *	N	4.000" / 3.999"	8.27"	-	7 ¹ / ₂ "	4.44"	1.00"	1" UNF 1.97" deep
	Metric	C	100.035 / 100.013	210	15	180	106	28	M24 x 3.0, 50 deep