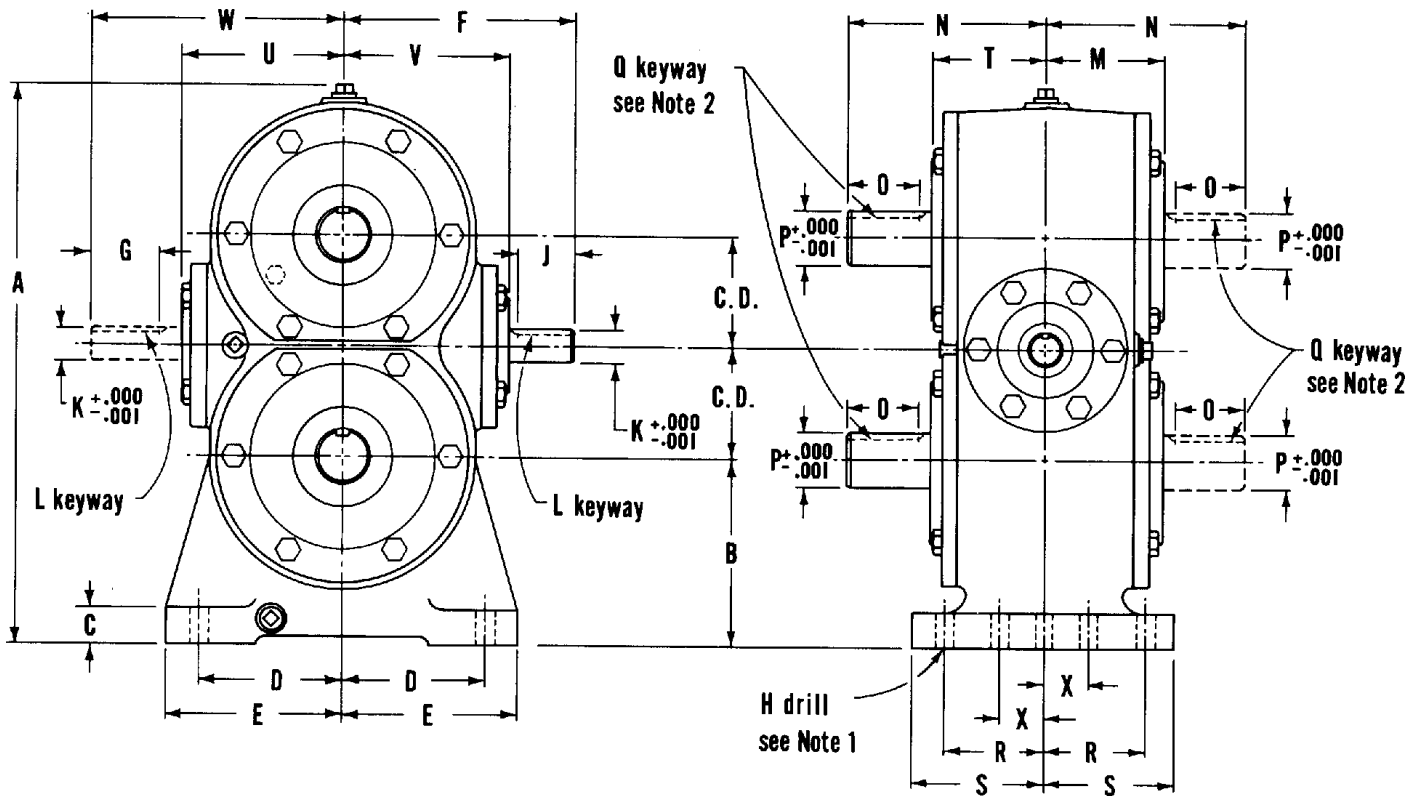


0107

**DuoDrive Size 20 to 240
#1 Assembly Shown**

Dimensions shown are for cast iron housing sizes D20 through D80.
Welded steel housings sizes D100 through D240.
Input and output shaft may extend on either side or may be double extended.



Notes:

1. Sizes D20 through D100, 4 mounting holes. Size D120, 6 mounting holes. Sizes D150 through D240, 8 mounting holes.
2. Sizes D150 through D240 have 2 keyways 180° apart, on each output shaft extension.
3. Unless otherwise specified housing will be furnished in cast iron or welded steel at our option.
4. Sizes D180 through D240 all dimensions subject to change at final design.

DuoDrive Motorizing Options

For motorizing options, please contact Textron Power Transmission.

0107

DuoDrive Size D20 to D240
Dimensions

Size	C.D.	A	B	C	D	E	F	G
D20	2.000	10.5	3.625	0.75	2.75	3.2	4.59	1.06
D25	2.500	12.8	4.250	0.88	3.25	3.9	5.25	1.00
D30	3.000	16.0	4.750	1.12	4.19	4.8	6.69	1.75
D35	3.500	17.5	5.375	1.25	4.88	5.7	7.75	2.63
D40	4.000	20.0	6.000	1.25	6.00	6.8	9.31	3.00
D50	5.000	23.7	6.875	1.25	7.50	8.4	10.50	3.25
D60	6.000	27.5	7.750	1.75	7.75	8.6	11.75	4.00
D70	7.000	31.3	9.000	2.12	8.50	9.5	14.50	4.50
D80	8.000	36.3	10.00	2.25	9.88	10.9	15.50	4.75
D100	10.000	44.7	12.00	1.75	12.63	13.7	19.25	4.25
D120	12.000	53.3	14.50	1.75	16.00	17.4	22.50	4.50
D150	15.000	61.8	16.00	2.25	18.25	19.8	26.25	5.50
D180	18.000	74.7	20.00	2.25	21.00	22.3	30.25	7.50
D220	21.837	90.0	23.00	2.75	25.50	27.0	34.50	9.50
D240	24.000	96.0	23.87	2.75	27.00	28.8	40.00	9.75

Size	H	J	K	L	M	N	O	P
D20	13/32	1.06	0.6875	3/16 x 3/32	2.2	4.06	1.19	1.125
D25	15/32	1.00	0.750	3/16 x 3/32	2.6	4.50	1.38	1.250
D30	9/16	1.75	1.000	1/4 x 1/8	3.4	5.94	2.00	1.500
D35	9/16	2.62	1.1875	1/4 x 1/8	4.2	7.88	2.68	1.875
D40	11/16	3.00	1.500	3/8 x 3/16	4.9	9.25	3.31	2.250
D50	13/16	3.25	1.500	3/8 x 3/16	5.7	10.31	3.62	2.750
D60	13/16	4.00	1.750	3/8 x 3/16	6.4	12.00	4.50	3.250
D70	15/16	4.50	1.875	1/2 x 1/4	7.4	13.00	4.87	3.375
D80	15/16	4.75	2.000	1/2 x 1/4	7.8	14.00	4.87	3.500
D100	1 1/16	5.00	2.375	5/8 x 5/16	9.4	15.72	5.12	4.000
D120	1 5/16	5.87	3.000	3/4 x 3/8	12.6	24.00	7.62	5.497
D150	1 5/16	8.50	3.500	7/8 x 7/16	14.7	25.00	9.50	6.500
D180	1 5/16	10.0	4.000	1 x 1/2	16.9	28.75	10.75	7.500
D220	1 9/16	10.0	4.500	1 x 1/2	21.9	36.00	12.75	9.000
D240	1 9/16	10.0	5.000	1 1/4 x 7/16	22.7	38.00	14.00	10.000

Size	Q	R	S	T	U	V	W	X
D20	1/4 x 1/8	2.19	2.7	2.4	3.0	3.0	4.59	
D25	1/4 x 1/8	2.56	3.1	2.6	3.8	3.8	5.25	
D30	3/8 x 3/16	2.81	3.5	3.4	4.7	4.7	6.69	
D35	1/2 x 1/4	3.75	4.4	4.2	5.2	5.2	7.75	
D40	1/2 x 1/4	4.25	5.0	4.9	6.0	6.0	9.31	
D50	5/8 x 5/16	4.75	5.6	5.7	7.0	7.0	10.50	
D60	3/4 x 3/8	5.63	6.5	6.4	7.7	7.7	11.75	
D70	7/8 x 7/16	6.63	7.6	7.4	9.4	9.4	14.50	
D80	7/8 x 7/16	7.38	8.4	7.8	10.8	10.8	15.50	
D100	1 x 1/2	8.38	9.5	9.4	14.5	13.4	19.25	
D120	1 1/4 x 5/8	10.88	12.3	12.6	17.2	15.7	23.25	
D150	1 1/2 x 3/4	12.25	13.8	16.1	20.2	18.3	27.88	4.12
D180	1 3/4 x 5/8	14.50	16.0	18.4	21.5	20.2	31.50	4.88
D220	2 1/2 x 7/8	18.25	19.8	22.7	24.9	23.8	37.00	6.25
D240	2 1/2 x 7/8	18.25	20.0	23.2	28.3	25.9	40.00	6.25